

**Paul Benton**  
Managing Director, International

**Sophie Green**  
International Accelerator Manager

**Michelle Michelucci**  
Head of International Events

**Lauren Hayes**  
Business Development Manager, International

**Nicola Hudson**  
Business Development Executive, International

Supports UK businesses to grow in international markets.

ABHI Groups: [International](#)

**Richard Philips**  
Executive Director, Policy and Partnerships

**Jonathan Evans**  
Director of Communications

**Kelley Ireland**  
Associate Director of Public Affairs

**Judith Mellis**  
Senior Manager, UK Market Affairs

**Emma Rowbottom**  
Researcher, Government Affairs

**Charlotte Hart**  
Communications & Events Executive

Responsible for ABHI's strategy, communications, member groups, healthcare policy development, trade and parliamentary activity.

ABHI Groups: [Public Affairs](#) | [Musculoskeletal](#) | [Cardiovascular](#) | [Patient Safety](#) | [Scotland](#)

**Luella Trickett**  
Executive Director, Medical Devices, Value and Access

**Addie MacGregor**  
Sustainability Manager

**Owain Prescott**  
Market Access Executive

Leads on embedding value-based procurement, and adoption and spread of technologies across innovation pathways, and the sustainability agenda.

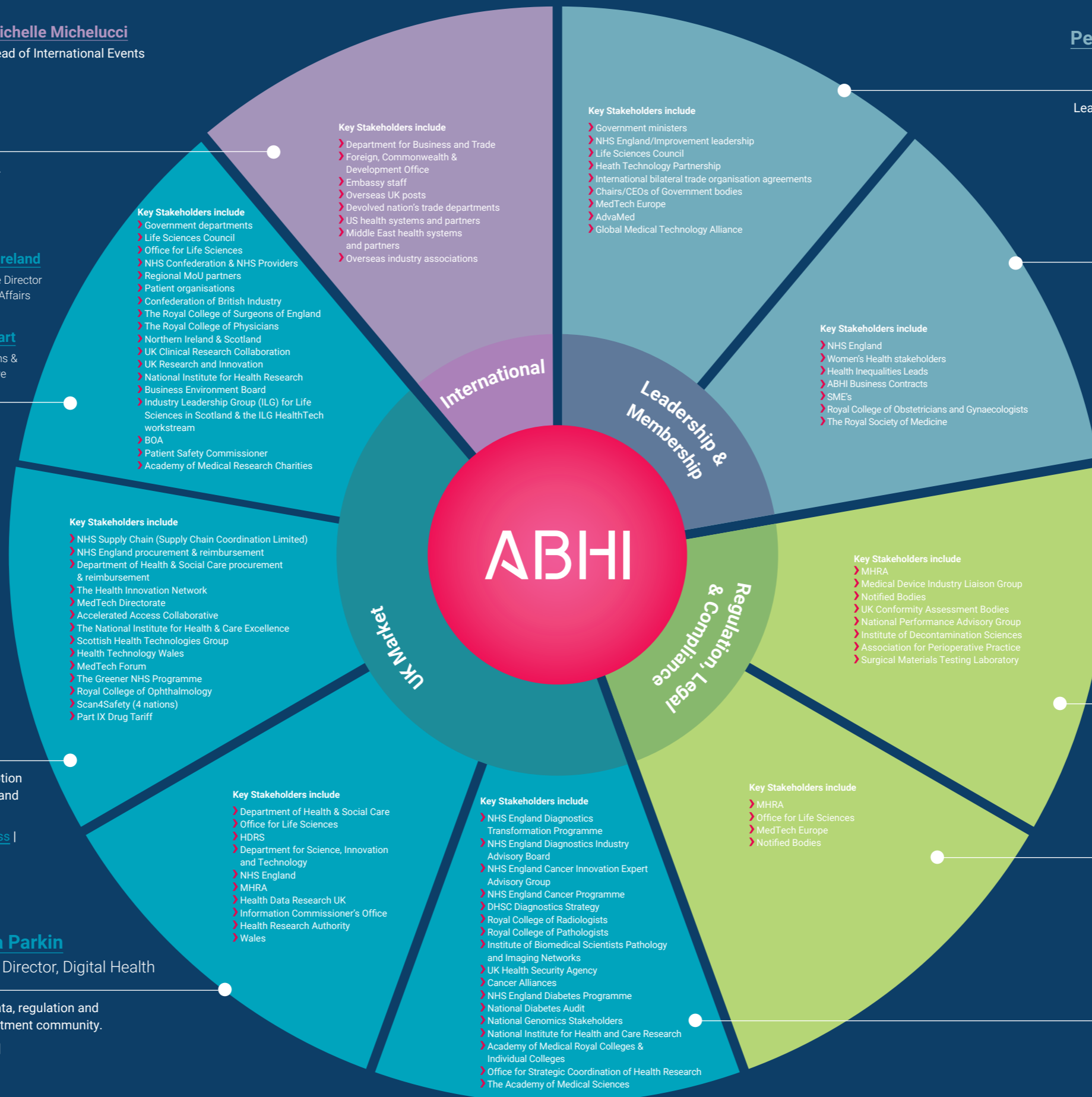
ABHI Groups: [Value & Access](#) | [Commercial Market Access](#) | [Sustainability](#) | [Ophthalmology](#) | [Wound Care](#)

**Andrew Davies**  
Executive Director, Digital Health

**Rebecca Parkin**  
Associate Director, Digital Health

Responsible for ABHI's digital health agenda, including data, regulation and market access work streams, as well as links to the investment community.

ABHI Groups: [Digital Health](#) | [Respiratory & Anaesthetics](#) | [Robotic Assisted Surgery](#)



**Peter Ellingworth**  
Chief Executive

**Angela Jeffery**  
Senior Manager, Operations

Leads ABHI, as well as senior government and NHS engagement.

ABHI Groups: [ABHI Board](#)

**Jane Lewis**  
Chief Operating Officer

Responsible for management of ABHI's financial processes and risk management procedures. Jane also leads ABHI's work on women's health and E,D&I.

ABHI Groups: [HR Leaders Network](#) | [SME](#) | [Women's Health](#)

**Phil Brown**  
Director, Regulatory & Compliance

Responsible for present and future medical device, regulatory policy, legal, compliance, ethics and credentialing.

ABHI Groups: [Regulatory](#) | [Decontamination](#) | [Legal Issues](#) | [Surgical](#)

**Bayode Adisa**  
Associate Director, Regulatory

ABHI Groups: [Regulatory](#)

**Steve Lee**  
Director, Diagnostics and Digital Regulation

Leads ABHI's diagnostics regulatory strategy.

ABHI Groups: [Regulatory](#) | [Diagnostics](#)

**Ravi Chana**  
Executive Director, Diagnostics

Leads ABHI's strategy to make high quality diagnostic technologies accessible to all who need them.

ABHI Groups: [Diagnostics](#) | [Diabetes](#)