

# ABHI

---

# QUARTERLY COMMUNICATIONS UPDATE

---

Q1 2026





**JONATHAN EVANS**  
**DIRECTOR OF COMMUNICATIONS**

[Jonathan.evans@abhi.org.uk](mailto:Jonathan.evans@abhi.org.uk)

Dear Member

These updates are designed to provide you with a snapshot of ABHI's recent activities, as well as highlighting what we have coming up across our programme of meetings and events.

As a member of ABHI, all staff within your company are entitled to receive our communications and they can subscribe to these via the homepage of our [website](#). We have four mailing lists they can join, covering our regular updates, our fortnightly newsletter, ABHI's UK events and our international programme.

Every update that we send to the membership is recorded in the [members' area](#) of our website, with access only available to members. Here, you will also find the minutes from previous group meetings, as well recordings from recent webinars.

To ensure your colleagues are kept up to date with the work of ABHI, and the opportunities to get involved, please do pass these updates on to your teams in the UK and across other markets.

As ever, we thank you for your continued support.

Jonathan Evans, Director of Communications, ABHI | [Jonathan.evans@abhi.org.uk](mailto:Jonathan.evans@abhi.org.uk)

If there was one word to describe ABHI's first quarter of 2026, it would be impact. Not only in responding to pressing challenges facing our sector, but also in seeing the results of long-term engagement begin to take shape.

One clear example was the Women's Health Summit in February. It was an exceptional and genuinely impactful event, bringing together leaders from across the healthcare ecosystem to address the persistent gender health gap. The discussions reinforced the importance of collaboration between industry, policymakers, and healthcare systems to drive meaningful change for women's health globally. The ambition shown by those in the room gives me confidence that the momentum behind this agenda will continue, and you will hear more from ABHI in the months ahead as we build on the energy and commitment generated by the Summit.

At the same time, we are seeing progress on issues that have required years of advocacy. At the recent International Medical Device Regulators Forum (IMDRF) meeting, the MHRA set out its ambition before global regulatory peers to indefinitely recognise CE marking and further develop its international reliance mechanisms. Having witnessed ABHI's

efforts over the past decade to support regulatory alignment and pragmatic pathways to market, it is encouraging to see this work come to fruition. This matters for continuity of supply, patient access to innovative technologies, and the UK's attractiveness as a market and destination for investment.

Alongside this progress, the ABHI team continues to strengthen the organisation's ability to support members. We are expanding our public affairs capability, alongside additional communications and events support, to deepen engagement with policymakers and help ensure business conditions enable the sector's growth, while continuing to deliver the practical activity members value. I look forward to members meeting the newest additions to the ABHI team over the coming months.

**Phil Kennedy, Chair, ABHI**

# ABHI'S 2026 PRIORITIES

Key Work Areas



## ACTIVITY SNAPSHOT: JAN - MAR 2026



**Deloitte.**

The economic and clinical case for shifting towards preventative health is compelling, which is why in March we convened members for a briefing on Deloitte's report *The Shift to Prevention: Realising the Socio-Economic Potential*. The session explored what this shift means for HealthTech and its role in supporting delivery of the NHS 10-Year Plan.



In January, we published [ABHI's 2025 Annual Review](#), showcasing the Association's impact over the past year. The report highlights progress against our priorities, strong member engagement across events and groups, and the collective momentum driving forward our work to support UK HealthTech.

.....

In February, our SME group met with Lawrence Tallon for a workshop to discuss key challenges facing UK HealthTech companies. The session enabled open dialogue on regulatory pressures and routes to market, while exploring practical solutions to support SMEs and ensure the UK remains a competitive environment for growth.

.....

We published our [2025 Pulse of the Sector](#) business survey, delivered in partnership with CPI. The findings highlight cautious optimism across the UK HealthTech sector, underpinned by strong R&D capability, but tempered by ongoing challenges around NHS adoption, regulatory performance and the impact of Net Zero requirements. The insights will inform our advocacy as we continue to push for a more competitive and innovation-friendly environment.



We saw the impact of Women's Health Hubs in practice, with ABHI's Jane Lewis and Dr Nina Wilson joining a site visit to hear directly from clinical teams delivering more joined-up, community-based care in Tower Hamlets. The model highlights how HealthTech can support earlier diagnosis, improve patient experience and enable the shift towards prevention and care closer to home.

In March, we hosted an Australia Market Update webinar in partnership with Medical Technology Association of Australia, providing members with practical insights into the regulatory, reimbursement and procurement landscape, and how to position their innovations for success in the Australian market.

.....

Boosting our digital health capability, we were pleased to welcome Rebecca Parkin to ABHI on a 12-month secondment from DHSC. Rebecca will support the development of ABHI's digital health agenda, working closely with members to strengthen policy development, support innovation, and champion approaches that enable system-wide adoption of impactful digital solutions.

.....

We joined colleagues at Scotland's Life Sciences Conference & Awards, celebrating the strength and success of the country's life sciences sector. ABHI continues to support HealthTech in Scotland and is proud to contribute to a thriving and growing ecosystem.



This quarter, we brought together Chairs and Vice-Chairs from across our member groups to share updates, challenges and opportunities. The meeting highlighted the breadth of activity underway, from regulatory harmonisation to procurement and sustainability, and the strong sense of collaboration and momentum driving progress across the HealthTech sector.

The MHRA launched a consultation on the indefinite recognition of CE-marked medical devices in Great Britain. We welcomed this pragmatic step, and, thanks to input from our members, provided comprehensive feedback to help shape a proportionate, globally competitive regulatory framework.

## ACTIVITY SNAPSHOT: JAN - MAR 2026

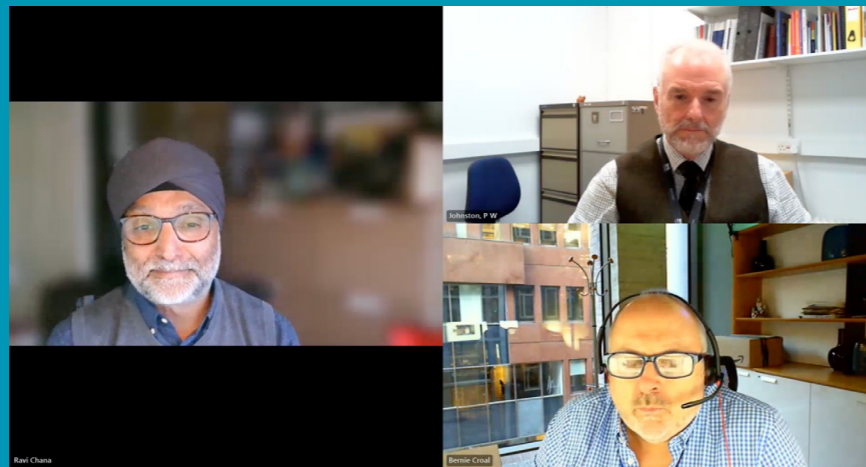


ABHI's Andrew Davies visited The Royal London Hospital to discuss the role of digital innovation in acute and specialist care. The visit highlighted how technology can enhance patient pathways, support clinical decision-making and help address health inequalities in the communities the hospital serves.

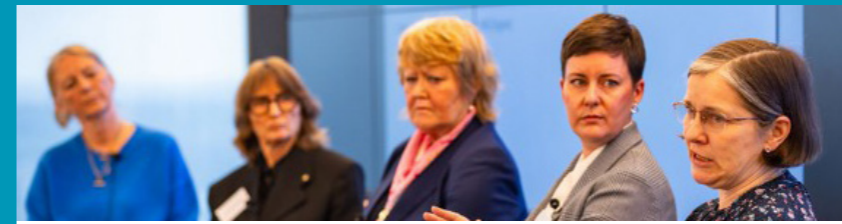
ABHI has consistently highlighted PFAS' essential role in HealthTech and was therefore pleased the UK's PFAS Plan supports a risk-based approach, recognising critical medical uses alongside environmental and health protections.



ABHI joined global regulatory leaders at the International Medical Device Regulators Forum in Singapore, engaging directly with regulators through the Global Medical Technology Alliance. Steve Lee joined a panel alongside global peers to discuss the future of international regulatory collaboration, with a focus on advancing reliance mechanisms to improve efficiency and patient access to innovation while maintaining high safety standards.



Following The Health Foundation's NHS Productivity Commission report, From Diagnosis to Delivery, we brought together Bernie Croal and Peter Johnston to explore how stronger collaboration between the NHS, Royal Colleges and industry can support improvements in diagnostic services, workforce capacity and patient care. You can [watch the conversation with Ravi Chana here.](#)



ABHI's Women's Health Summit convened senior leaders from across the health and care system to address the gender health gap. The event marked an important moment for ABHI, bringing together a high calibre of voices to drive meaningful discussion and, crucially, set out actions to improve outcomes for women and strengthen collaboration across the sector.



In March, we continued our NHS engagement programme by convening members with leaders from Leeds Teaching Hospitals NHS Trust. The session provided valuable insight into the Trust's strategic priorities and opportunities for collaboration, including innovation adoption, research, and routes to engage with clinical and procurement teams.

In February we held the NHS England Diabetes Team - Industry Engagement meeting at the IQVIA offices. The event focused on how we can all work together on the roll out of Hybrid Closed Loop and Continuous Glucose Monitoring. In the afternoon companies got a chance to have one on one meetings with NHS colleagues. A successful meeting by all accounts!

Our annual Gender Equality in HealthTech survey was launched, designed to capture the barriers, opportunities and lived experiences shaping the sector. The findings will be presented at our Women in HealthTech event in June.

In March, we hosted a webinar with ABHI Member Native Design Ltd, exploring how strategic design can support faster innovation in regulated healthcare environments. The session provided practical insights for SMEs on balancing innovation with regulatory, clinical and procurement requirements, drawing on real-world case studies and global experience.



Back at one of the world's largest healthcare events, the ABHI UK Pavilion welcomed over 200 organisations at WHX Dubai this February.

# ABHI'S GROUPS:

## April – June Meetings 2026

### APRIL

- 15<sup>th</sup> ABHI Orthopaedics
- 16<sup>th</sup> ABHI Sustainability
- 22<sup>nd</sup> ABHI Government Affairs
- 29<sup>th</sup> ABHI ABHI Women's Health

### MAY

- 5<sup>th</sup> ABHI Digital Health
- 26<sup>th</sup> ABHI Scotland

### JUNE

- 2<sup>nd</sup> ABHI MD Regulatory
- 3<sup>rd</sup> ABHI SME
- 4<sup>th</sup> ABHI Value & Access
- 9<sup>th</sup> ABHI Cardiovascular
- 15<sup>th</sup> ABHI Diagnostics
- 16<sup>th</sup> ABHI Legal Issues
- 16<sup>th</sup> ABHI HR
- 24<sup>th</sup> ABHI Wound Care
- 25<sup>th</sup> ABHI IVD Regulatory
- 29<sup>th</sup> ABHI Orthopaedics
- 30<sup>th</sup> ABHI Robotic Assisted Surgery
- 30<sup>th</sup> ABHI ABHI International

To join any of our group meetings, contact [enquiries@abhi.org.uk](mailto:enquiries@abhi.org.uk)



### ABHI'S 2026 Conferences, Webinars and Events : Dates for Your Diary

- 15<sup>th</sup> April ABHI & FPM. Companion Diagnostics: Pathways, Policy and Practice [Register here](#)
- 23<sup>rd</sup> April ABHI & Manchester University NHS Foundation Trust [Register here](#)
- 12<sup>th</sup> May ABHI & Cambridge University Health Partners [Register here](#)
- 14<sup>th</sup> May Our Future Health: Supporting the Future of Prevention, Detection and Care [Register here](#)
- 2<sup>nd</sup> June ABHI Women in HealthTech [Register here](#)
- 3<sup>rd</sup> July ABHI Member Briefing [Register here](#)
- 6<sup>th</sup> July ABHI Parliamentary Reception [Register here](#)
- 30<sup>th</sup> September ABHI Sustainability Conference [Register here](#)
- Save the Date 9<sup>th</sup>-10<sup>th</sup> November ABHI UK HealthTech Conference



## Join ABHI around the globe

Event	Date	Location	Venue
<b>WHX Dubai</b> (formerly Arab Health)	February	Dubai, UAE	Dubai Exhibition Centre
<b>MedLab Middle East</b>	February	Dubai, UAE	Dubai Exhibition Centre
<b>Hospitalar</b>	May	São Paulo, Brazil	São Paulo Expo
<b>WHX Lagos</b>	June	Lagos, Nigeria	Landmark Centre
<b>HLTH Europe</b>	June	Amsterdam, Netherlands	RAI Convention Centre
<b>WHX Miami</b>	June	Miami, United States	Miami Beach Convention Center
<b>WHX Osaka</b>	July	Osaka, Japan	INTEX OSAKA
<b>WHX Bangkok</b>	July	Bangkok, Thailand	Queen Sirikit National Convention Center (QSNCC), Bangkok
<b>WHX Tech</b>	September	Dubai, UAE	Dubai World Trade Centre
<b>WHX Johannesburg</b>	October	Johannesburg, South Africa	Gallagher Convention Centre, Johannesburg, South Africa
<b>Global Health Exhibition</b>	October	Riyadh, Saudi Arabia	Riyadh Convention & Exhibition Centre, Malham

Contact [michelle.michelucci@abhi.org.uk](mailto:michelle.michelucci@abhi.org.uk) or visit [www.abhi.org.uk/international](http://www.abhi.org.uk/international)

<b>US Accelerator</b>	Year-Round	USA	Nationwide
-----------------------	------------	-----	------------

Contact [USAccelerator@abhi.org.uk](mailto:USAccelerator@abhi.org.uk) or visit [www.abhi.org.uk/international](http://www.abhi.org.uk/international)

<b>Middle East Accelerator</b>	Year-Round	UAE & Saudi Arabia	Nationwide
--------------------------------	------------	--------------------	------------

Contact [MEAccelerator@abhi.org.uk](mailto:MEAccelerator@abhi.org.uk) or visit [www.abhi.org.uk/international](http://www.abhi.org.uk/international)

# WELCOME TO ABHI

This quarter, we were pleased to welcome the following new members to ABHI:

**AtriCure**

AtriCure UK Ltd

**chase**

CHASE

**CURONIX**

Curonix LLC

**firefinch**  
software development

Firefinch Software Ltd

**FPT** Software

FPT Software UK Ltd

**InnoScot**  
Health

InnoScot Health

**INTERSURGICAL**  
COMPLETE RESPIRATORY SYSTEMS

Intersurgical

**STORZ**  
KARL STORZ – ENDOSKOPE

Karl Storz Endoscopy (UK) Ltd.

**MedStride**

MedStride Ltd

**METTLE**

Mettler Studio Ltd

**RSM**

RSM UK

**Tandem**

Tandem Health

**tl testlabs**

Test Labs Ltd

**unipharmedtech**

Uniphar Medtech Ltd



**Paul Benton**  
Managing Director, International

**Suzie Ali-Hassan**  
International Business Director

**Michelle Michelucci**  
Head of International Events

**Lauren Hayes**  
Business Development Manager, International

**Sophie Green**  
International Accelerator Manager

**Nicola Hudson**  
Business Development Executive, International

Supports UK businesses to grow in international markets.  
ABHI Groups: [International](#)

**Richard Philips**  
Executive Director, Policy and Partnerships

**Jonathan Evans**  
Director of Communications

**TBC**  
Associate Director of Public Affairs

**Judith Mellis**  
Senior Manager, UK Market Affairs

**Emma Rowbottom**  
Researcher, Government Affairs

**TBC**  
Communications & Events Executive

Responsible for ABHI's strategy, communications, member groups, healthcare policy development, trade and parliamentary activity.  
ABHI Groups: [Public Affairs](#) | [Musculoskeletal](#) | [Cardiovascular](#) | [Patient Safety](#) | [Scotland](#)

**Luella Trickett**  
Executive Director, Medical Devices, Value and Access

**Addie MacGregor**  
Sustainability Manager

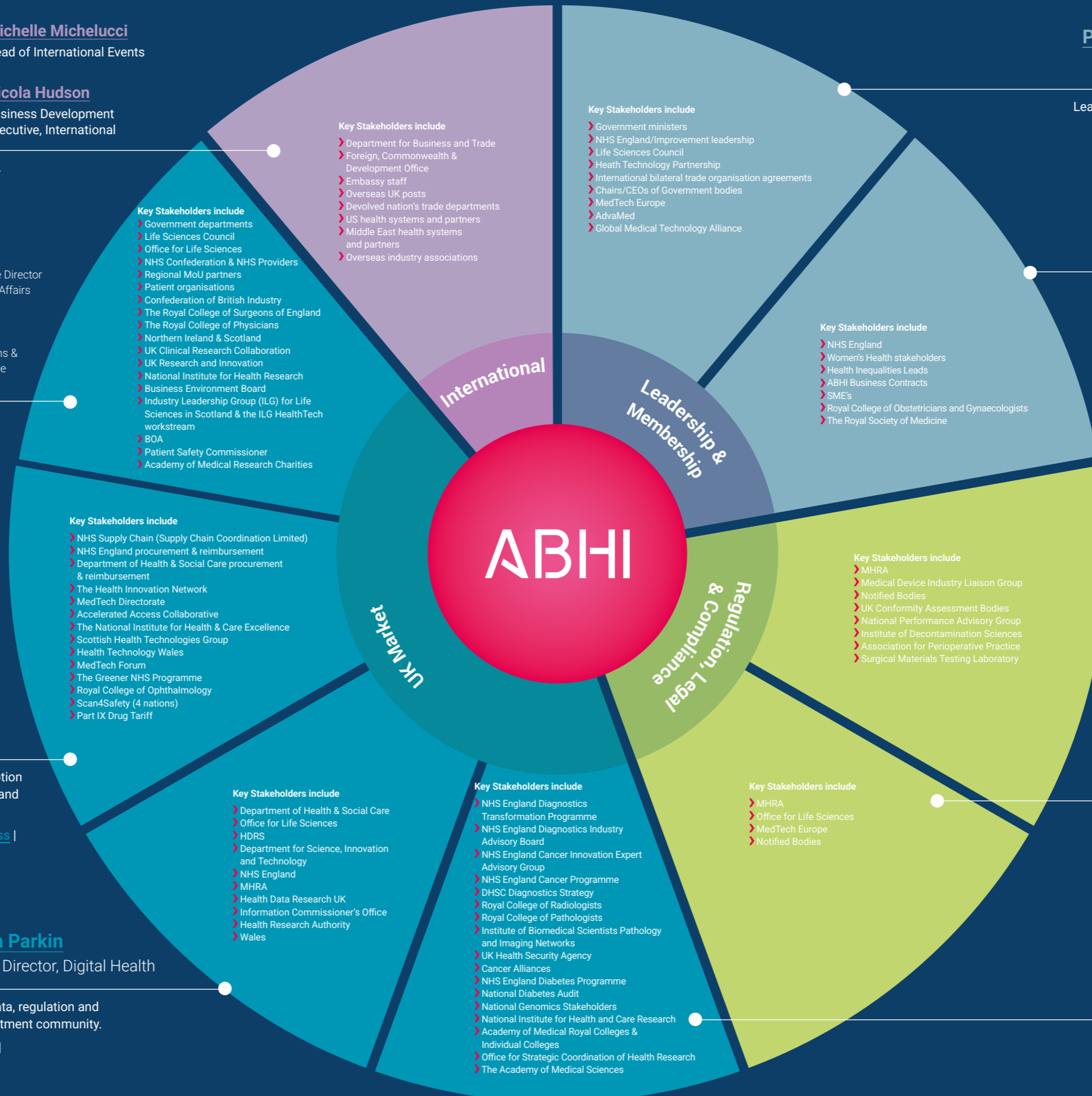
**Lucy Stevenson**  
Market Access Team Administrator

Leads on embedding value-based procurement, and adoption and spread of technologies across innovation pathways, and the sustainability agenda.  
ABHI Groups: [Value & Access](#) | [Commercial Market Access](#) | [Sustainability](#) | [Ophthalmology](#) | [Wound Care](#)

**Andrew Davies**  
Executive Director, Digital Health

**Rebecca Parkin**  
Associate Director, Digital Health

Responsible for ABHI's digital health agenda, including data, regulation and market access work streams, as well as links to the investment community.  
ABHI Groups: [Digital Health](#) | [Respiratory & Anaesthetics](#) | [Robotic Assisted Surgery](#)



**Peter Ellingworth**  
Chief Executive

**Angela Jeffery**  
Senior Manager, Operations

Leads ABHI, as well as senior government and NHS engagement.  
ABHI Groups: [ABHI Board](#)

**Jane Lewis**  
Chief Operating Officer

Responsible for management of ABHI's financial processes and risk management procedures. Jane also leads ABHI's work on women's health and E,D&I.  
ABHI Groups: [HR Leaders Network](#) | [SME Women's Health](#)

**Phil Brown**  
Director, Regulatory & Compliance

Responsible for present and future medical device, regulatory policy, legal, compliance, ethics and credentialing.  
ABHI Groups: [Regulatory](#) | [Decontamination](#) | [Legal Issues](#) | [Surgical](#)

**Steve Lee**  
Director, Diagnostics and Digital Regulation

Leads ABHI's diagnostics regulatory strategy.  
ABHI Groups: [Regulatory](#) | [Diagnostics](#)

**Ravi Chana**  
Executive Director, Diagnostics

Leads ABHI's strategy to make high quality diagnostic technologies accessible to all who need them.  
ABHI Groups: [Diagnostics](#) | [Diabetes](#)



Association of British HealthTech Industries  
Suite 2, 4th Floor, 1 Duchess Street,  
London, W1W 6AN

A company limited by guarantee.  
Registered in England no. 1469941. Registered office as above.

+44 (0)20 7960 4360  
[enquiries@abhi.org.uk](mailto:enquiries@abhi.org.uk)  
[www.abhi.org.uk](http://www.abhi.org.uk)  
X @UK\_ABHI

**ABHI**