

ABHI / Dell Medical School Partnership Program

Dec 3, 2024

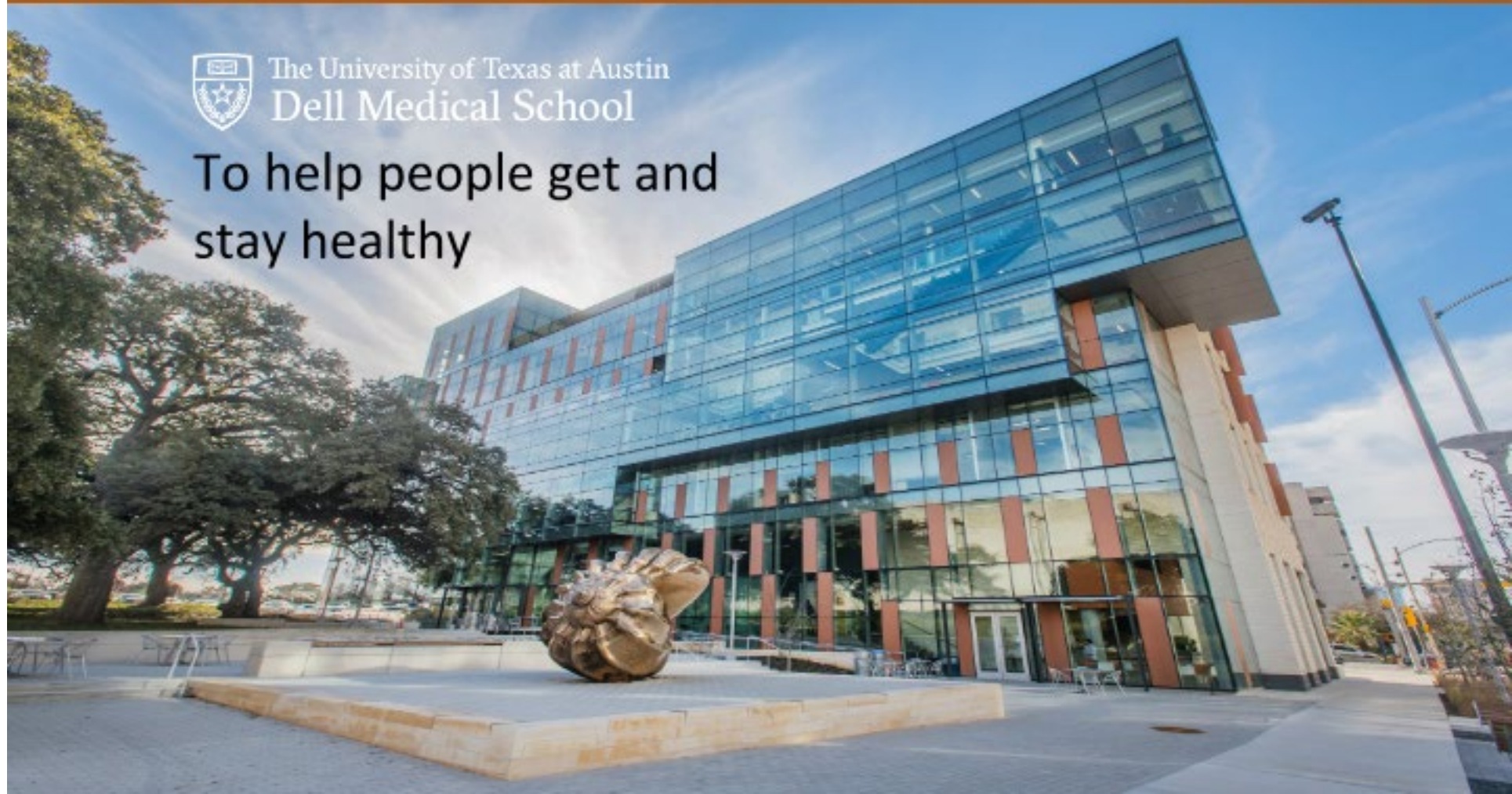
Ruben Rathnasingham, PhD
Asst. Dean for Health Product Innovation



The University of Texas at Austin
Dell Medical School

 The University of Texas at Austin
Dell Medical School

To help people get and
stay healthy



Clinical / Research Facilities



Health Transformation Building

The Health Transformation Building, in the southeast area of the UT Austin campus, is home to [UT Health Austin](#), the clinical practice of Dell Med. In addition to a variety of outpatient clinics, the HTB includes a dedicated clinical research suite and an ambulatory surgery center, scheduled to open in mid-2020.



Dell Seton Medical Center at The University of Texas

Located on the UT Austin campus, adjacent to the medical school buildings, Dell Seton Medical Center at The University of Texas is a 211-bed Level I trauma facility. Dell Seton Medical Center opened in 2017 and was designed and built as a dedicated teaching hospital.



Ascension Seton Medical Center Austin

Ascension Seton Medical Center Austin, the area's largest medical-surgical acute care center, is a joint Commission-accredited part of the Ascension Seton Family of Hospitals.



Dell Children's Medical Center of Central Texas

Dell Children's Medical Center of Central Texas is a freestanding pediatric facility with a Level IV neonatal intensive care unit and a Level IV epilepsy designation. As the only pediatric Level I trauma center in the region, this 248-bed facility and its associated clinics serves a 46-county area.

Research Labs



Health Discovery Building

Connected to the HTB by a covered walkway, the Health Discovery Building consists of over 264,000 square feet of research-related wet and dry lab space and core facilities such as the Biomedical Microscopy Center and the [Biomedical Imaging Center](#). The Biomedical Imaging Center houses a 3T MRI scanner, a strong connection to the [Texas Advanced Computing Center](#) real-time fMRI and a number of resources for imaging in model systems, as well as imaging-informed fabrication and machining.



Dell Pediatric Research Institute

Located across the street from Dell Children's Medical Center, Dell Pediatric Research Institute is a state-of-the-art research facility with over 150,000 square feet of research lab space and core facilities including a histology core, confocal microscopy core and flow cytometry core.

Departments

Department of Diagnostic Medicine

Department of Health Social Work

Institute for Military & Veteran Family Wellness

Department of Internal Medicine

Department of Medical Education

Department of Neurology

Department of Neurosurgery

Department of Oncology

Department of Ophthalmology

Centers & Institutes

Center for Health Communication

Center for Health & Environment: Education & Research

Center for Health Interprofessional Practice & Education

Center for Psychedelic Research & Therapy

Dell Pediatric Research Institute

Department of Pediatrics

Department of Population Health

Department of Psychiatry & Behavioral Sciences

Center for Youth Mental Health

Institute for Early Life Adversity Research

Department of Surgery & Perioperative Care

Department of Women's Health

Livestrong Cancer Institutes

Mitchel & Shannon Wong Eye Institute

Mulva Clinic for the Neurosciences

Value Institute for Health & Care

Waggoner Center for Alcohol & Addiction Research

Neurology

- + Neurogenetics
- + Neurodevelopment
- + Neuroimmunology
- + Neurophysiology
- + Neuroscience
- + Signal Analysis
- + Speech-Language Pathology

Neurosurgery

- + Brain Tumor Immunology

Pediatrics

- + Musculoskeletal disease
- + Nutrition
- + Pharmacology

Population Health

- + Chronic Disease Prevention
- + Data & Technology
- + Genomics
- + Health Communication
- + LGBTQ+ Health
- + Urban Environments

Psychiatry & Behavioral Sciences

- + Behavioral Genetics
- + Cognition
- + Neurodevelopment & Mood Disorders
- + Neuroscience
- + Trauma

Surgery & Perioperative Care

- + Trauma

Oncology

- + Computational Oncology
- + Systems Biology

Austin/Central Texas

Research Hubs

- UT Austin (Dell Medical School, College of Pharmacy)
- Seton HealthCare Family
- St. David's HealthCare
- Michale E. Keeling Center for Comparative Medicine and Research
- Virginia Harris Cockrell Cancer Research Center
- Dell Pediatric Research Institute
- Emergent Technologies
- Austin Heart Hospital
- UT Drug Dynamics Institute
- Texas Institute for Robotic Surgery
- NeuroTexas Institute

Innovation Hubs

- UT Office of Technology Commercialization
- Austin Technology Incubator
- Austin Community College Bioscience Incubator
- Texas State University STAR Park
- Texas Health Catalyst (UT)
- M2M Element
- UTech Dorm Room



Austin Region (Health Tech)

- Advisory Board Company
- athenahealth
- Babylon
- ClearDATA
- Digital Pharmacist
- eClinicalWorks
- Elligo Health Research
- eMDs
- ESO Solutions
- Experian Health
- Express Scripts
- HeartFlow
- Iodine Software
- L7 Informatics
- Leidos
- Lumeris
- MAP Health Management
- Merck & Co.
- PotentiaMetrics
- TransUnion Healthcare
- VersaSuite
- WellSky

Austin Region (Pharma/Biotech)

- Aeglea BioTherapeutics
- Agilent Technologies
- Allergan
- Bioo Scientific Corp.
- Caisson Biotech
- Celling Biosciences
- Grifols
- ICU Medical
- Luminex Corp.
- Lumos Pharma
- Molecular Templates
- Pharmaceutical Product Development
- SACHEM
- Syneos Health
- Thermo Fisher Scientific
- Worldwide Clinical Trials
- WuXi Clinical
- Xbiotech

Austin Region (Med Devices)

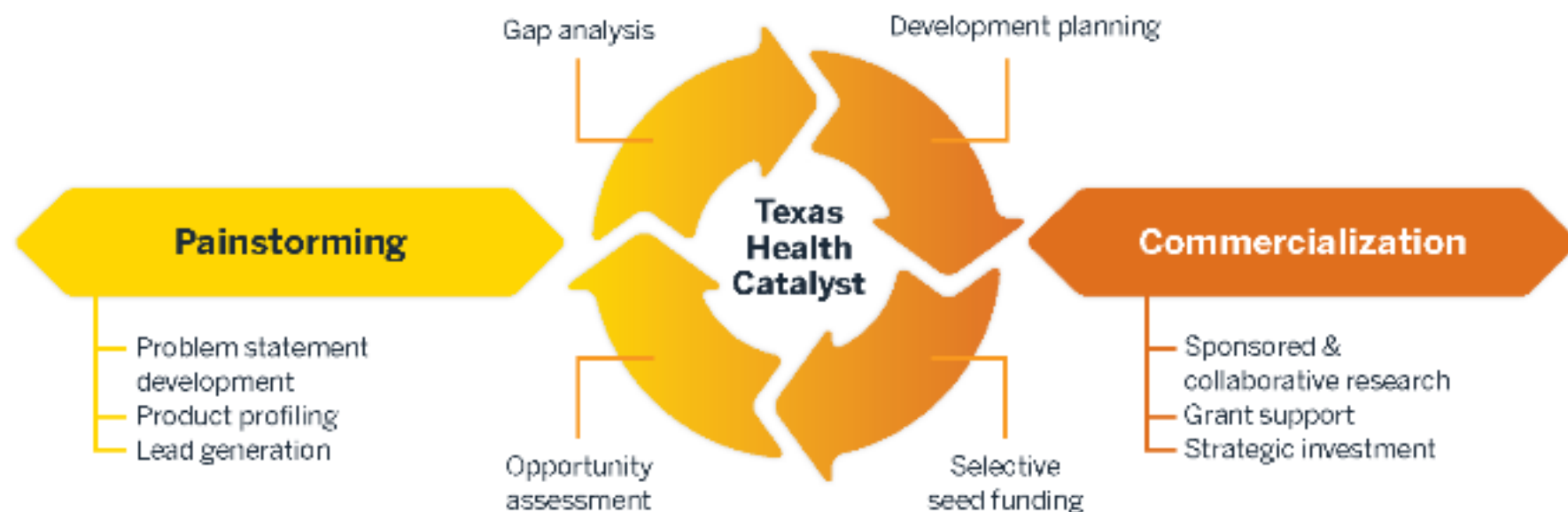
- Abbott Laboratories
- Apollo Endosurgery
- Artivion
- DJO Surgical
- Flex
- Hanger
- HealthTronics
- Integra LifeSciences
- International Biomedical
- Kyocera Medical Technologies
- Neuralink
- OriGen Biomedical
- OsteoCentric Technologies
- Ottobock
- Smith & Nephew
- Spinesmith Partners
- Varian Medical Systems
- Zimmer Biomet

"There's a spirit in Austin that prides itself in innovation. That's where we wanted to be."

Tom Kirk, President & CEO, Hanger

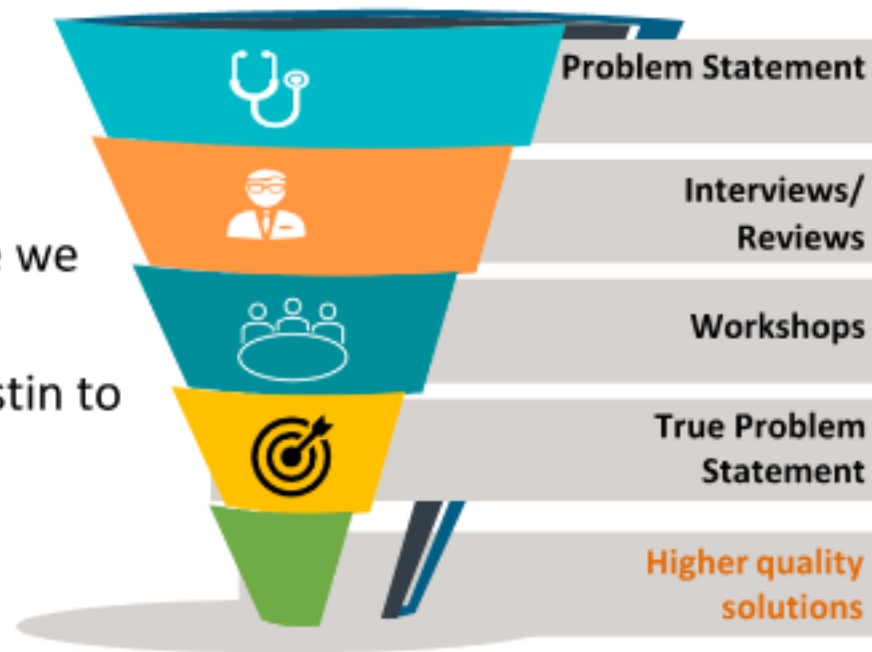
Dell Med's Innovation Platform

Are we solving the right problem? → Are we developing the right solution? → Do we have the right go-to-market strategy?



Painstorming Before Brainstorming

- Needs finding and problem definition
- Leveraging clinical & industry expertise to 'painstorm' before we brainstorm
- Building partnerships at UT Austin to ideate & build prototypes.



Innovations Catalyzed Through Partnership



Technology to help anesthesia professionals monitor their patients during surgery,



Introduction and facilitation with anesthesiologists, who guided product development, clinical adoption and US-market entry



Launched in Seton/Ascension Healthcare System



Patient monitoring platform



Identified use case in pediatric cardiology, and clinical champion to assess requirements.



Sponsored study to validate use case and outcome to support regulatory clearance



Parkinson's Disease Remote Monitoring



Partner with Neurology to assess requirements and multiple device companies



Research contracts to support collaborative pre-clinical and clinical research.

ABHI / Dell Med Tradeshow



Partnership Workflow

- Reach out and set up an introductory call (standing office hours every week)
 - Company/product introduction
 - Key next steps in the US (clinical regulatory, reimbursement review, clinical pilot, sales, etc.)
 - Identify potential clinical or business champion at Dell Med (or not)
- Follow up with potential Dell Med sponsor/advisor to develop a plan and agreement structure
- Painstorming engagement



THANK YOU



The University of Texas at Austin
Dell Medical School