

Paul Benton
Managing Director,
International

Michelle Michelucci
Head of International Events

Lauren Hayes
Business Development
Manager, International

Sophie Green
International Accelerator
Manager

Nicola Hudson
Business Development
Executive, International

Supports UK businesses to grow in international markets.

ABHI Groups: [International](#)

Richard Philips

Executive Director,
Policy & Partnerships

Jonathan Evans

Director of
Communications

Kelley Ireland

Associate Director of
Public Affairs

Judith Mellis

Senior Manager, UK
Market Affairs

Emma Rowbottom

Researcher,
Government Affairs

Charlotte Hart

Communications &
Events Executive

Responsible for ABHI's strategy, communications, member groups, healthcare policy development, trade and parliamentary activity.

ABHI Groups: [Public Affairs](#) | [Musculoskeletal](#) | [Cardiovascular](#) | [Patient Safety](#) | [Scotland](#)

Luella Trickett

Executive Director,
Medical Devices,
Value and Access

Addie MacGregor

Sustainability Manager

Lucy Stevenson

Market Access
Team Administrator

Owain Prescott

Market Access Executive

Leads on embedding value-based procurement, and adoption and spread of technologies across innovation pathways, and the sustainability agenda.

ABHI Groups: [Value & Access](#) | [Commercial Market Access](#) | [Sustainability](#) | [Ophthalmology](#) | [Wound Care](#)

Andrew Davies

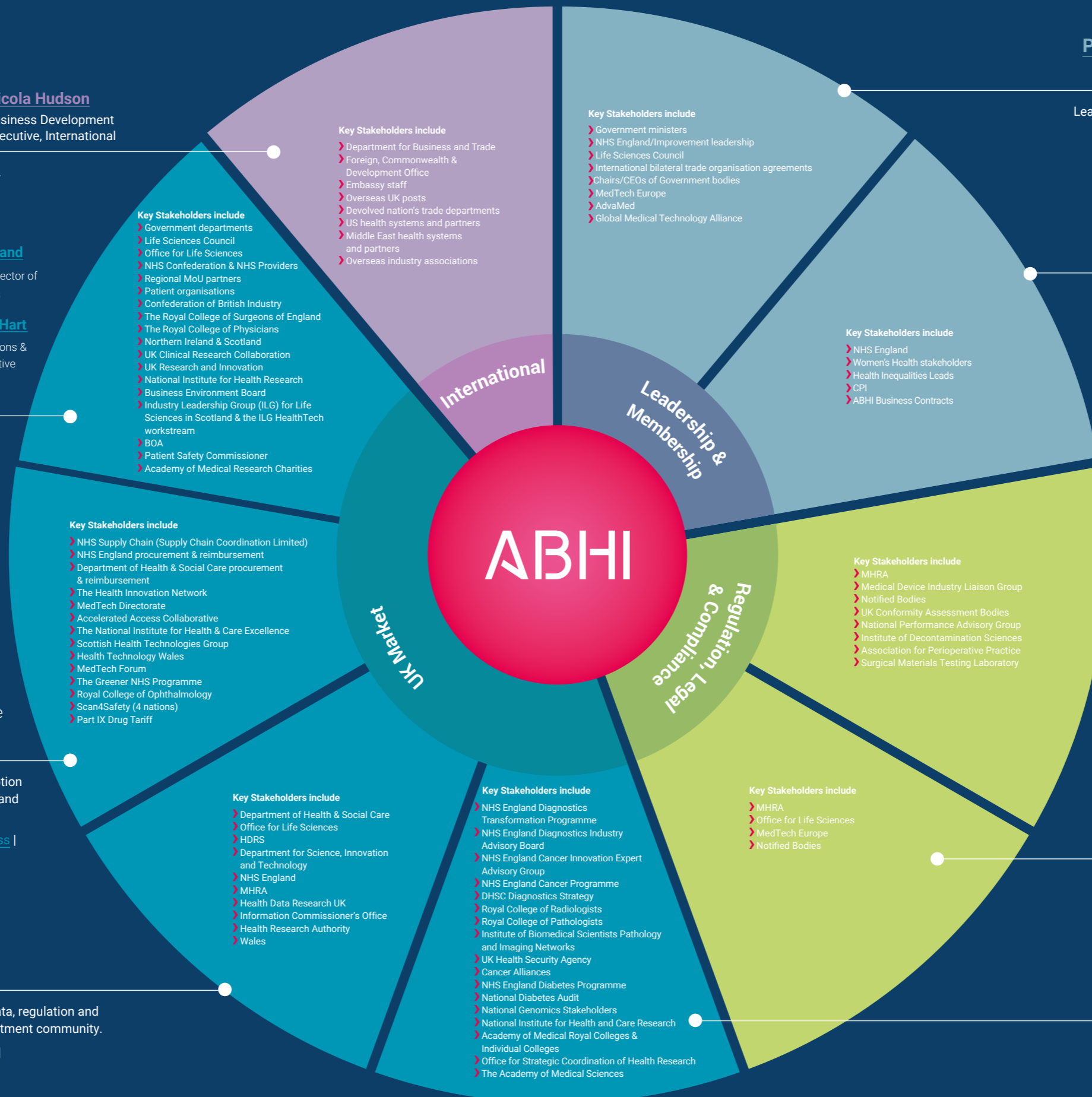
Executive Director,
Digital Health

Rebecca Parkin

Associate Director,
Digital Health

Responsible for ABHI's digital health agenda, including data, regulation and market access work streams, as well as links to the investment community.

ABHI Groups: [Digital Health](#) | [Respiratory & Anaesthetics](#) | [Robotic Assisted Surgery](#)



Peter Ellingworth

Chief Executive

Angela Jeffery

Senior Manager, Operations

Leads ABHI, as well as senior government and NHS engagement.

ABHI Groups: [ABHI Board](#)

Jane Lewis

Chief Operating Officer

Responsible for management of ABHI's financial processes and risk management procedures. Jane also leads ABHI's work on health equity, E,D &I.

ABHI Groups: [HR Leaders Network](#) | [SMEs](#) | [Equity & Women's Health](#)

Phil Brown

Director, Regulatory & Compliance

Responsible for present and future medical device, regulatory policy, legal, compliance, ethics and credentialing.

ABHI Groups: [Regulatory](#) | [Decontamination](#) | [Legal Issues](#) | [Surgical](#)

Bayode Adisa

Associate Director, Regulatory

Steve Lee

Director, Diagnostics and Digital Regulation

Leads ABHI's diagnostics regulatory strategy.

ABHI Groups: [Regulatory](#) | [Diagnostics](#)

Ravi Chana

Executive Director, Diagnostics

Leads ABHI's strategy to make high quality diagnostic technologies accessible to all who need them.

ABHI Groups: [Diagnostics](#) | [Diabetes](#)