

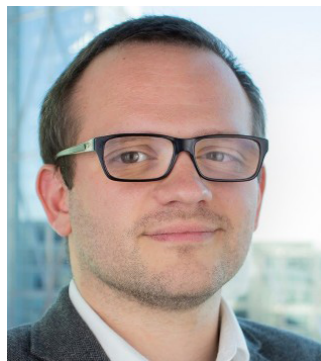
# ABHI

---

# QUARTERLY COMMUNICATIONS UPDATE

---

Q2 2026



**JONATHAN EVANS**  
**DIRECTOR OF COMMUNICATIONS**

[Jonathan.evans@abhi.org.uk](mailto:Jonathan.evans@abhi.org.uk)

**Dear Member**

These updates are designed to provide you with a snapshot of ABHI's recent activities, as well as highlighting what we have coming up across our programme of meetings and events.

As a member of ABHI, all staff within your company are entitled to receive our communications and they can subscribe to these via the homepage of our [website](#). We have four mailing lists they can join, covering our regular updates, our fortnightly newsletter, ABHI's UK events and our international programme.

Every update that we send to the membership is recorded in the [members' area](#) of our website, with access only available to members. Here, you will also find the minutes from previous group meetings, as well recordings from recent webinars.

To ensure your colleagues are kept up to date with the work of ABHI, and the opportunities to get involved, please do pass these updates on to your teams in the UK and across other markets.

As ever, we thank you for your continued support.

Jonathan Evans, Director of Communications, ABHI | [Jonathan.evans@abhi.org.uk](mailto:Jonathan.evans@abhi.org.uk)

The second quarter of 2026 has demonstrated ABHI's growing reach on the international stage. In an increasingly interconnected and complex operating environment, our role in convening stakeholders, sharing expertise, and helping shape global policy and regulatory discussions has never been more important.

This was particularly evident at MedTech Forum in Stockholm, where ABHI contributed across a range of key topics, from women's health and regulatory alignment to the future role of AI. Through our leadership within the Global Medical Technology Alliance (GMTA), the global collective of HealthTech trade associations, we have established international working groups on women's health and sustainability. These groups provide a platform to share best practice, align approaches to common challenges, and help inform international policy and standards development. They also ensure that UK HealthTech perspectives are represented in important global conversations and create new opportunities for collaboration between markets.

Delivering this work requires the right expertise and capacity. During the quarter, we made targeted investments across public affairs, regulation, and market access, enhancing our ability to advocate for members, respond to emerging challenges, and seize new opportunities. I am excited about what this strengthened Secretariat will achieve as we continue to deliver practical outcomes for the sector.

It would also be remiss of me not to mention the latest meeting of the ABHI Board, kindly hosted in Derby by Graeme Cameron, Chief Executive of Pennine Healthcare. Pennine is an outstanding example of a UK HealthTech company combining innovation with a deep commitment to its local community. Spending time with Graeme and his team was a timely reminder of the vital role played by the thousands of SMEs that underpin our sector. Their ingenuity, resilience, and ambition are central to the success of UK HealthTech and the patients and healthcare systems we serve.

**Phil Kennedy, Chair, ABHI**

# ABHI'S 2026 PRIORITIES

## Key Work Areas



## ACTIVITY SNAPSHOT: APRIL - JUNE 2026



Chronic wounds affect up to 2% of the population and consume around 4% of healthcare spend, yet remain under-prioritised. Working with European partners, we supported [new evidence](#) showing the challenge is not a lack of solutions, but inconsistent implementation, highlighting the need for earlier intervention, better coordinated care, and outcomes-based funding.



We were pleased to host two further partnership events this quarter with Manchester University NHS Foundation Trust and Cambridge University Health Partners. These events connected ABHI members with NHS leaders to discuss shared challenges, showcase innovation, and identify opportunities to improve care through greater collaboration.

With ongoing geopolitical tensions disrupting global shipping and supply chains, we [hosted a webinar](#) with Mecomed and BLK Partners, sharing practical insights on managing disruption, navigating force majeure, and strengthening organisational resilience.

Building on our MoU with Barts Health NHS Trust, we hosted a [webinar highlighting its ambitious plans](#) for the Barts Life Sciences Cluster, offering members insight into future facilities, collaboration opportunities, and how to engage with this emerging innovation hub.

Quantum technologies are rapidly moving into real-world application, with quantum sensing emerging as a promising frontier in healthcare. In June, we hosted a webinar exploring its potential across clinical pathways, with experts from UCL's Q-BIOMED.



Continuing our work with Barts, we convened a roundtable on AI for an inclusive and productive NHS, highlighting that while innovation is strong, progress will depend on clearer, faster routes to adoption, including a more coordinated "front door" for innovators, which Barts has committed to delivering over the next 12 months.



Women make up over half the population, yet remain underrepresented in clinical trials, limiting understanding of how conditions affect them. [This infographic](#), based on an ABHI discussion with [Dr Nina Wilson and Johnson & Johnson's Bobbi Chapman](#), highlights key barriers and practical solutions, supporting improved research, innovation, and outcomes in women's health.

Earlier this year we hosted the ABHI Women's Health Summit. [In this report](#) from the day, we set out a clear message: women's health is not a niche issue but a system-level challenge, requiring coordinated action to improve research, innovation, and outcomes.

We are continuing to invest in ABHI's capabilities to enhance the support we provide to members, and this quarter welcomed Kelley Ireland as Associate Director, Public Affairs, and Charlotte Hart to strengthen our events and communications activity.



The refreshed Advisory Group for the second term of the Office of the Patient Safety Commissioner met for the first time, bringing together a diverse group of voices to strengthen how patient safety is shaped, with Peter Ellingworth pleased to contribute to the discussion.

## ACTIVITY SNAPSHOT: APRIL - JUNE 2026



Wound care remains a significant but often underestimated challenge for the NHS. [New analysis](#) supported by ABHI shows leg ulcers affect up to 1.5 million people and drive substantial productivity losses, highlighting the need for better data, more consistent care, and wider implementation to improve outcomes.

Continuing the theme of investing in talent, we welcomed Bayode Adisa as Associate Director, Regulatory, and Owain Prescott as Market Access Executive, further strengthening our regulatory expertise and support for innovation adoption across the NHS.



Canada is the world's eighth largest HealthTech market, presenting significant opportunities for UK companies looking to expand internationally. To help members better understand the landscape, we [hosted a webinar](#) with leaders from MedTech Canada exploring key considerations for doing business in the market, including regulation, reimbursement, procurement, and wider routes to adoption.



As part of ABHI's work on health inequalities and women's health, [we hosted a webinar](#) exploring the role of sex-specific diagnostic thresholds in improving patient outcomes, highlighting how frameworks built largely on male data may contribute to women being underdiagnosed and underserved, and reinforcing the importance of sex-specific evidence in driving more equitable innovation.

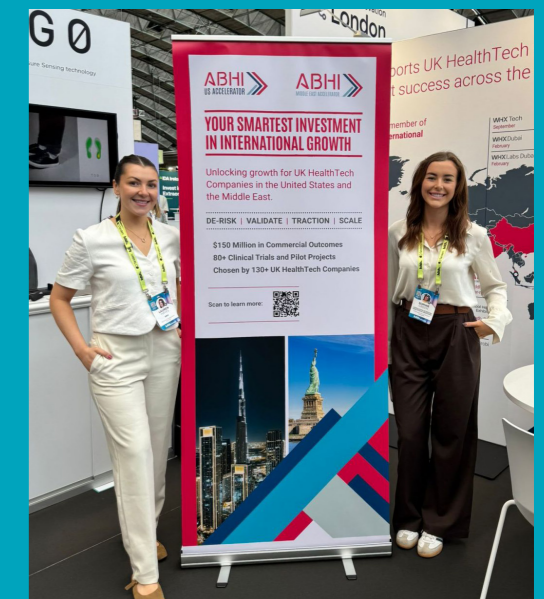


We hosted our annual Women in HealthTech event in June, bringing together leaders from across industry, the NHS and professional services to explore progress and persistent barriers to equality. Insights from our latest survey highlighted ongoing challenges including imposter syndrome, the gender pay gap, and caregiving responsibilities, alongside a growing focus on culture, flexibility and wellbeing, reinforcing the need for more inclusive leadership and sustained action to improve outcomes for women.

Continuing the MHRA's regulatory reform programme, draft legislation setting out updated premarket requirements for medical devices and IVDs in Great Britain has been published, and in May we hosted a webinar providing an initial overview, with ABHI supporting members through analysis, engagement, and coordinated responses as the consultation progresses.

Changes to patient access requirements in Scotland mean PVG scheme membership has replaced DBS checks, with companies responsible for assessing applicability and ensuring compliance. ABHI supported members through this update, including [a webinar with Addleshaw Goddard in May](#).

In May, NICE launched a consultation on proposed changes to the process for managing funding variation requests linked to technology appraisal guidance, and ABHI submitted a response on behalf of members to help inform the approach.



Amsterdam hosted HLTH Europe 2026 this quarter, where the ABHI team showcased our work supporting UK HealthTech companies both in the UK and internationally. The event brought together healthcare leaders, innovators, investors, and policymakers from around the world, providing valuable opportunities to build relationships, share expertise, and promote the strengths of the UK HealthTech sector.

## ACTIVITY SNAPSHOT: APRIL - JUNE 2026



ABHI International hosted its Global Ambitions Forum in June, bringing together industry leaders, entrepreneurs and partners to explore how to select and succeed in international markets. The event highlighted that growth depends less on market choice and more on disciplined execution, strong partnerships and operational readiness, with consistent, in-market engagement key to successful global expansion.



At MedTech Forum in Stockholm, ABHI played a leading role across the programme, advancing key priorities including women's health, global regulatory alignment, and AI in quality and compliance, while strengthening international collaboration through engagement with partners and the Global Medical Technology Alliance.



In May, the latest cohort of ABHI's US Accelerator took part in a trade mission to Memphis and Nashville, joined by Barts Health CEO Shane DeGaris, strengthening international connections and providing members with valuable insight into the US HealthTech landscape.



We published our latest paper, [Delivering Gold Standard Maternity Care with HealthTech](#), setting out seven recommendations for how technology can support safer, more personalised maternity care and better outcomes for women, babies and families.



In May, Sophie Green had the pleasure of presenting to the Propel HealthTech Scale-up cohort about the US market, exploring the key considerations and opportunities for companies looking to expand internationally.



Ravi Chana was pleased to facilitate sessions at the EU Medical Device Summit in Düsseldorf this June, leading discussions on medical device regulation and the growing impact of AI across industry and healthcare.



Working across the ABHI Diabetes Group we supported [Diabetes Scotland in raising concerns](#) about the NHS Scotland decision to cease funding for Hybrid Closed Loop (HCL) technologies for Type 1 patients. This was picked up by major media outlets and has meant clarification of funding being devolved centrally to the health boards.

# ABHI'S GROUPS:

## July – September Meetings 2026

### JULY

### SEPTEMBER

1 <sup>st</sup> ABHI Sustainability	1 <sup>st</sup> ABHI Legal Issues
6 <sup>th</sup> ABHI Government Affairs	8 <sup>th</sup> ABHI Value & Access
8 <sup>th</sup> ABHI Patient Safety	9 <sup>th</sup> ABHI SME
9 <sup>th</sup> ABHI Diabetes	10 <sup>th</sup> ABHI Diagnostics
14 <sup>th</sup> ABHI Digital Health	14 <sup>th</sup> ABHI Scotland
	15 <sup>th</sup> ABHI Robotic Assisted Surgery
	15 <sup>th</sup> ABHI MD Regulation
	15 <sup>th</sup> ABHI International
	17 <sup>th</sup> ABHI Cardiovascular
	23 <sup>th</sup> ABHI Digital Health
	24 <sup>th</sup> ABHI IVD Regulatory
	29 <sup>th</sup> ABHI Wound Care

To join any of our group meetings, contact [enquiries@abhi.org.uk](mailto:enquiries@abhi.org.uk)



### ABHI'S 2026 Conferences, Webinars and Events : Dates for Your Diary

- 3<sup>rd</sup> July ABHI Member Briefing [Register here](#)
- 6<sup>th</sup> July ABHI Parliamentary Reception [Register here](#)
- 20<sup>th</sup> July Understanding The NHS Strategic Supplier Programme [Register here](#)
- 30<sup>th</sup> September ABHI Sustainability Conference [Register here](#)
- 7<sup>th</sup> October ABHI Digital Health Conference [Register here](#)
- 9<sup>th</sup>-10<sup>th</sup> November ABHI UK HealthTech Conference [Register here](#)





## Join ABHI around the globe

Event	Date	Location	Venue
WHX Dubai	February	Dubai, UAE	Dubai Exhibition Centre
MedLab Middle East	February	Dubai, UAE	Dubai Exhibition Centre
Hospitalar	May	São Paulo, Brazil	São Paulo Expo
WHX Lagos	June	Lagos, Nigeria	Landmark Centre
HLTH Europe	June	Amsterdam, Netherlands	RAI Convention Centre
WHX Miami	June	Miami, United States	Miami Beach Convention Center
WHX Osaka	July	Osaka, Japan	INTEX OSAKA
WHX Bangkok	July	Bangkok, Thailand	Queen Sirikit National Convention Center (QSNCC), Bangkok
WHX Tech	September	Dubai, UAE	Dubai World Trade Centre
WHX Johannesburg	October	Johannesburg, South Africa	Gallagher Convention Centre, Johannesburg, South Africa
Global Health Exhibition	October	Riyadh, Saudi Arabia	Riyadh Convention & Exhibition Centre, Malham

Contact [michelle.michelucci@abhi.org.uk](mailto:michelle.michelucci@abhi.org.uk) or visit [www.abhi.org.uk/international](http://www.abhi.org.uk/international)

US Accelerator	Year-Round	USA	Nationwide
----------------	------------	-----	------------

Contact [USAccelerator@abhi.org.uk](mailto:USAccelerator@abhi.org.uk) or visit [www.abhi.org.uk/international](http://www.abhi.org.uk/international)

Middle East Accelerator	Year-Round	UAE & Saudi Arabia	Nationwide
-------------------------	------------	--------------------	------------

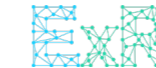
Contact [MEAccelerator@abhi.org.uk](mailto:MEAccelerator@abhi.org.uk) or visit [www.abhi.org.uk/international](http://www.abhi.org.uk/international)

# WELCOME TO ABHI

This quarter, we were pleased to welcome the following new members to ABHI:



**Echo Orthopaedics**



**ExR Solutions Ltd**



**Intersurgical Ltd**



**Mastek UK Ltd**



**Panakeia Technologies Ltd**



**Pierre Fabre Ltd**



**SILIMED UK Limited**



**SWART Evaluation**



**Zeumed**

**Paul Benton**  
Managing Director, International

**Sophie Green**  
International Accelerator Manager

**Michelle Michelucci**  
Head of International Events

**Lauren Hayes**  
Business Development Manager, International

**Nicola Hudson**  
Business Development Executive, International

Supports UK businesses to grow in international markets.  
ABHI Groups: [International](#)

**Richard Philips**  
Executive Director, Policy and Partnerships

**Jonathan Evans**  
Director of Communications

**Kelley Ireland**  
Associate Director of Public Affairs

**Judith Mellis**  
Senior Manager, UK Market Affairs

**Emma Rowbottom**  
Researcher, Government Affairs

**Charlotte Hart**  
Communications & Events Executive

Responsible for ABHI's strategy, communications, member groups, healthcare policy development, trade and parliamentary activity.  
ABHI Groups: [Public Affairs](#) | [Musculoskeletal](#) | [Cardiovascular](#) | [Patient Safety](#) | [Scotland](#)

**Luella Trickett**  
Executive Director, Medical Devices, Value and Access

**Addie MacGregor**  
Sustainability Manager

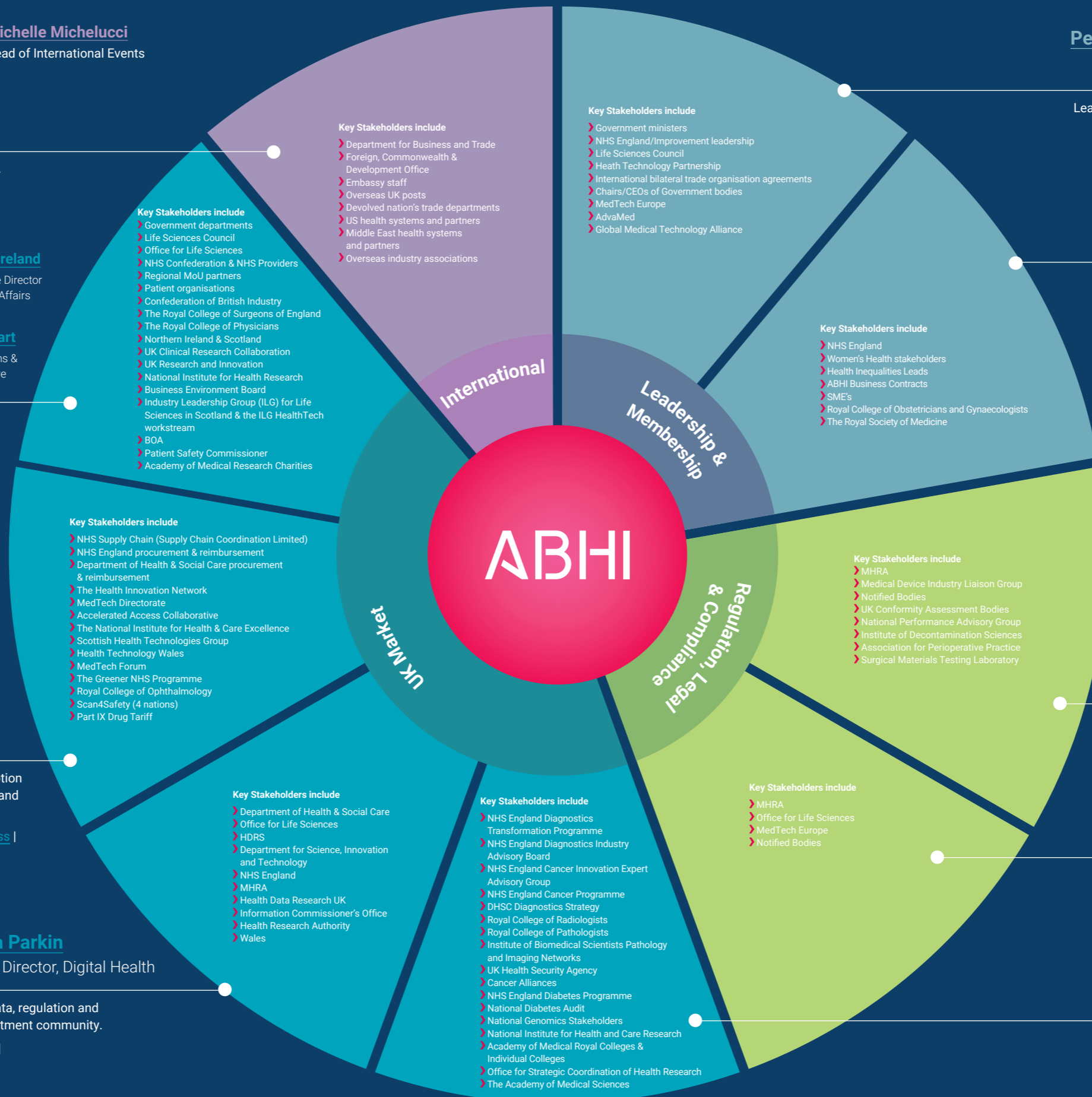
**Owain Prescott**  
Market Access Executive

Leads on embedding value-based procurement, and adoption and spread of technologies across innovation pathways, and the sustainability agenda.  
ABHI Groups: [Value & Access](#) | [Commercial Market Access](#) | [Sustainability](#) | [Ophthalmology](#) | [Wound Care](#)

**Andrew Davies**  
Executive Director, Digital Health

**Rebecca Parkin**  
Associate Director, Digital Health

Responsible for ABHI's digital health agenda, including data, regulation and market access work streams, as well as links to the investment community.  
ABHI Groups: [Digital Health](#) | [Respiratory & Anaesthetics](#) | [Robotic Assisted Surgery](#)



**Peter Ellingworth**  
Chief Executive

**Angela Jeffery**  
Senior Manager, Operations

Leads ABHI, as well as senior government and NHS engagement.  
ABHI Groups: [ABHI Board](#)

**Jane Lewis**  
Chief Operating Officer

Responsible for management of ABHI's financial processes and risk management procedures. Jane also leads ABHI's work on women's health and E,D&I.  
ABHI Groups: [HR Leaders Network](#) | [SME](#) | [Women's Health](#)

**Phil Brown**  
Director, Regulatory & Compliance

Responsible for present and future medical device, regulatory policy, legal, compliance, ethics and credentialing.  
ABHI Groups: [Regulatory](#) | [Decontamination](#) | [Legal Issues](#) | [Surgical](#)

**Bayode Adisa**  
Associate Director, Regulatory

ABHI Groups: [Regulatory](#)

**Steve Lee**  
Director, Diagnostics and Digital Regulation

Leads ABHI's diagnostics regulatory strategy.  
ABHI Groups: [Regulatory](#) | [Diagnostics](#)

**Ravi Chana**  
Executive Director, Diagnostics

Leads ABHI's strategy to make high quality diagnostic technologies accessible to all who need them.  
ABHI Groups: [Diagnostics](#) | [Diabetes](#)



Association of British HealthTech Industries  
Suite 2, 4th Floor, 1 Duchess Street,  
London, W1W 6AN

A company limited by guarantee.  
Registered in England no. 1469941. Registered office as above.

+44 (0)20 7960 4360  
[enquiries@abhi.org.uk](mailto:enquiries@abhi.org.uk)  
[www.abhi.org.uk](http://www.abhi.org.uk)  
✕ @UK\_ABHI

**ABHI**