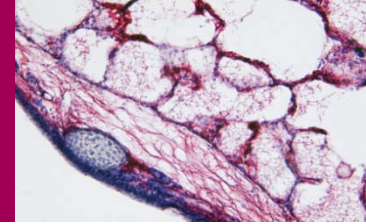


Translational Research Partnership *Inflammatory Respiratory Disease*



Translational Research Partnerships are an internationally unique approach to supporting open innovation and collaboration with the life sciences industries.

They provide a single point of access to collaborate with **world-class investigators** in the **UK's leading academic and NHS centres**. Working in partnership with industry, they drive early and exploratory development of new drugs, technologies and other interventions.

Translational Research Partnerships offer:

- Recognised experience in current exploratory development protocols, expertise in pathophysiology and disease mechanisms, expertise in modelling
- Enabling technologies and infrastructure, including imaging, biobanks, accredited laboratory facilities
- Cohorts of well-characterised patients available for clinical development studies

Inflammatory Respiratory Disease Expertise

- Acute lung injury
- Airway inflammation
- Allergy
- Asthma
- COPD
- Cystic Fibrosis
- Idiopathic Pulmonary Fibrosis
- Respiratory infection

Inflammatory Respiratory Disease Centres

- Guy's & St Thomas' NHS Foundation Trust / Kings College London NIHR Biomedical Research Centre
- Royal Brompton & Harefield NIHR Biomedical Research Unit in Respiratory Disease
- Institute for Lung Health, University of Leicester
- Manchester NIHR Respiratory Translational Research Centre
- Nottingham NIHR Biomedical Research Unit in Respiratory Disease
- Oxford NIHR Biomedical Research Centre
- Queen's University, Belfast
- Southampton NIHR Biomedical Research Unit in Respiratory Disease
- University College London Centre for Respiratory Research

As members of a Partnership, each centre has committed to work with industry through a consistent point of contact provided by the NIHR Office for Clinical Research Infrastructure (NOCRI).



**National Institute for
Health Research**

Office for Clinical Research Infrastructure

To work with the Inflammatory Respiratory Disease Translational Research Partnership, please contact

NOCRI: nocri@nhr.ac.uk +44 (0) 207 210 6217